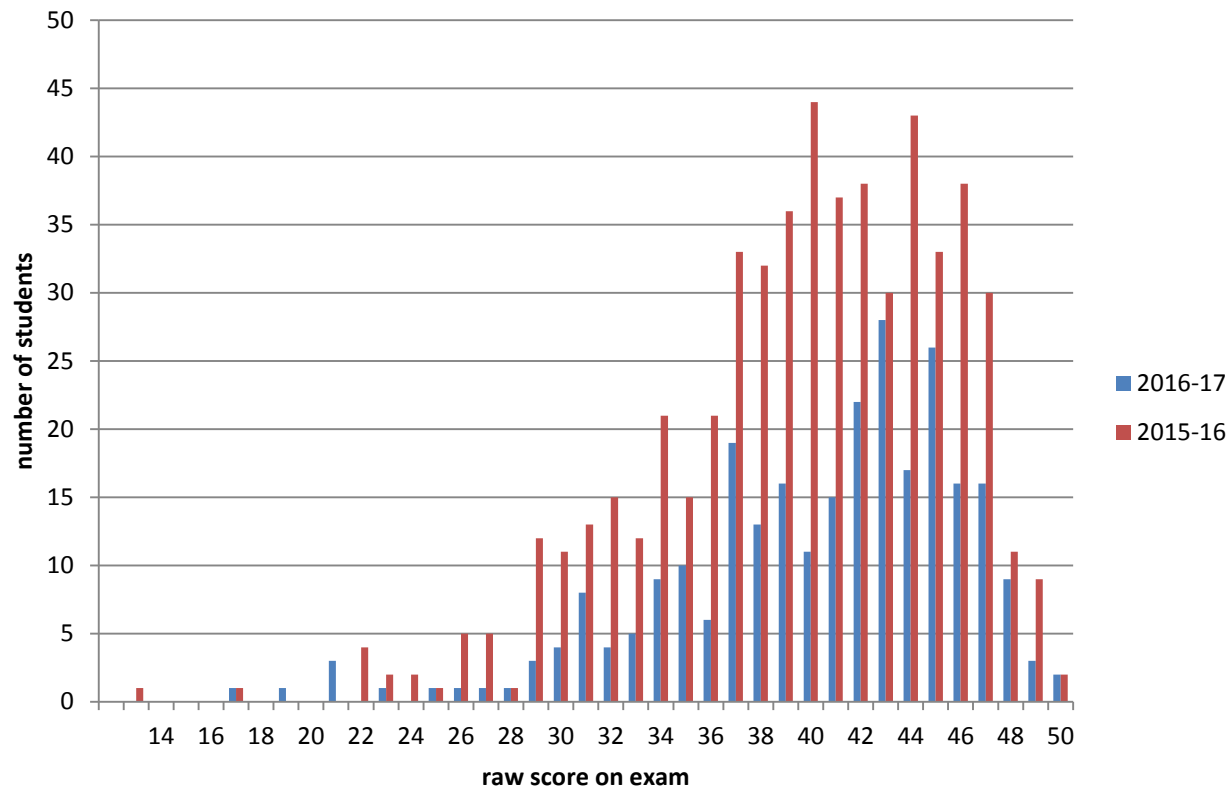


Chemistry Assessment Appendix 2016-17

Figure 1. Grade distribution on CH SAC assessment exam



2015-2016	
n	559
mean	39.6
median	40
standard deviation	5.9

2016-2017	
n	273
mean	40.2
median	42
standard deviation	5.9

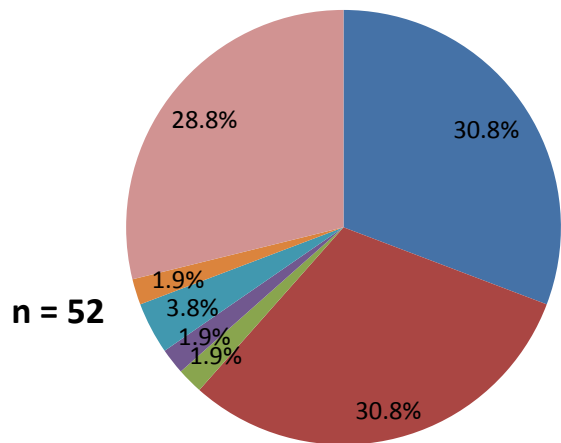
Anova single value: No statistically significant difference between sets.

Figure 2. Relationship between performance on the assessment fall term 2016 and final grade in CH221 winter term 2017.

Students who took the assessment in CH151 fall term **and** passed CH151. n = 218

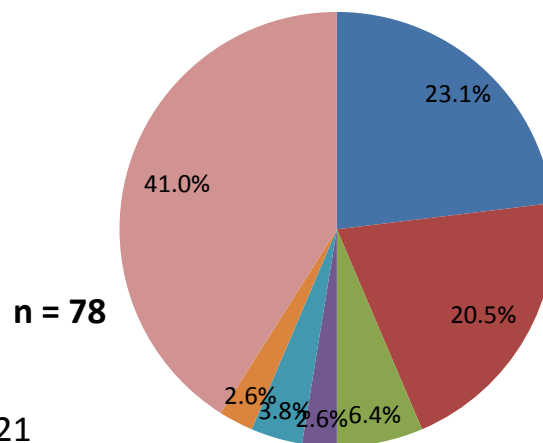
Data not shown for students who received an F on the assessment. n = 7

A on the assessment

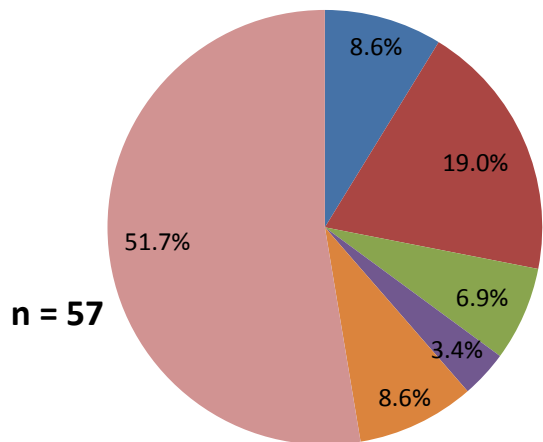


O = did not take CH221 winter 2017

B on the assessment



C on the assessment



D on the assessment

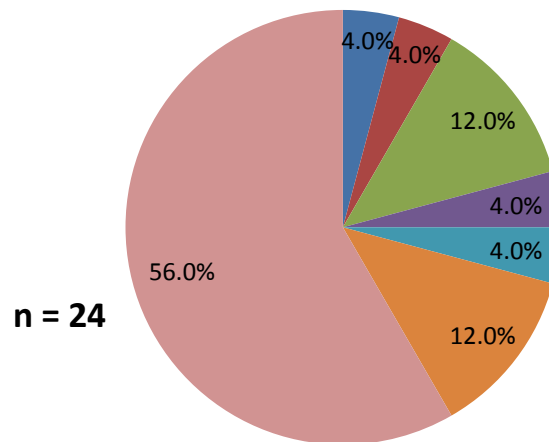


Figure 3. Correlation between score on assessment and final grade in CH151.

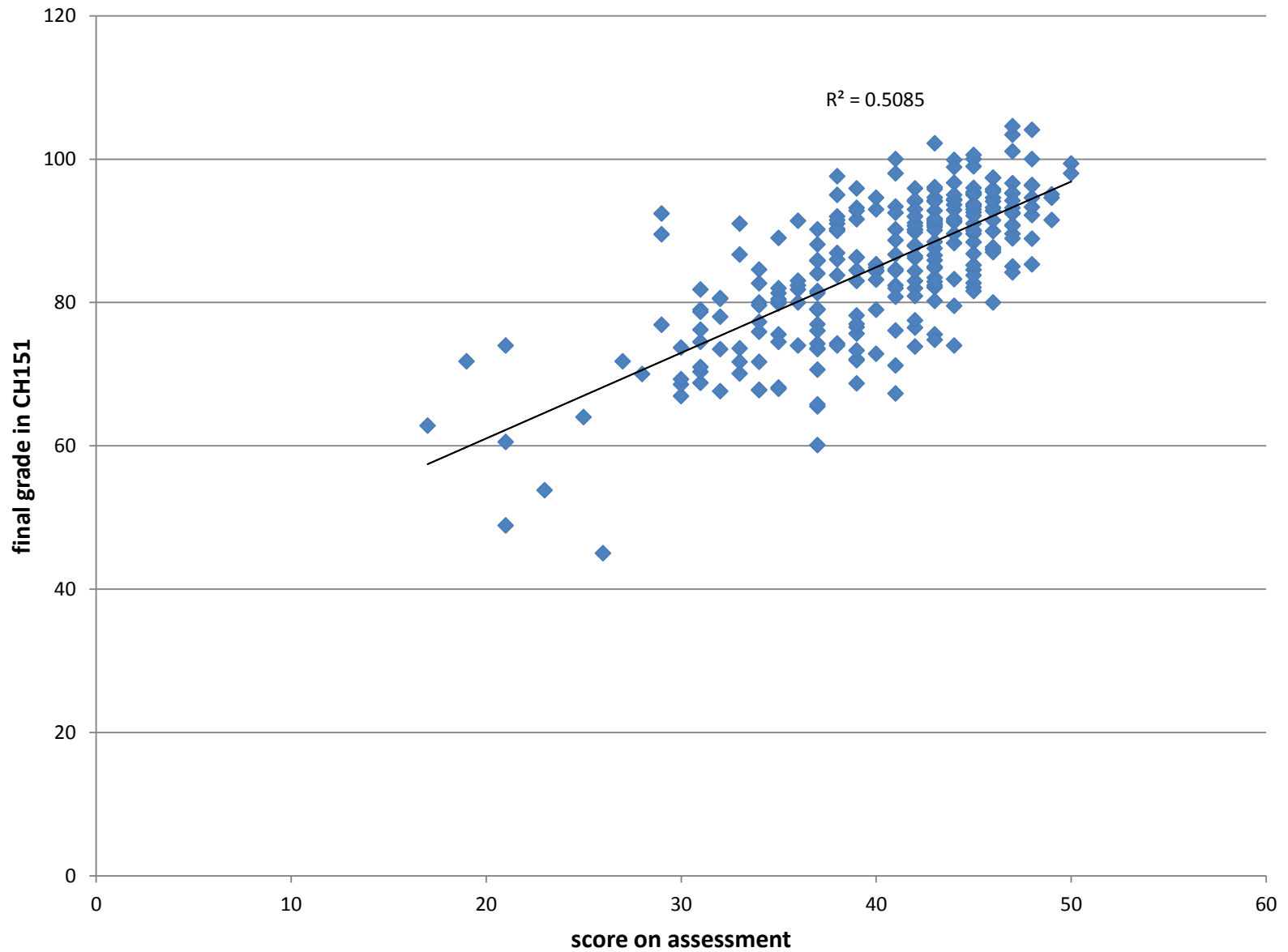
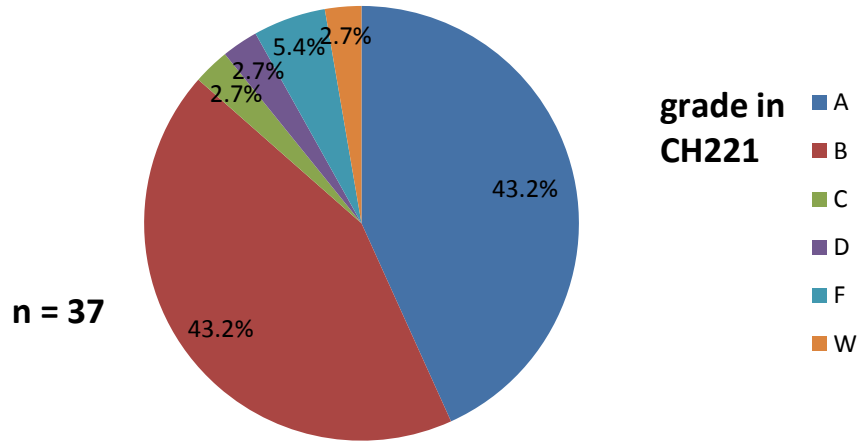


Figure 4. Relationship between performance on the assessment fall term 2016 and final grade in CH221 winter term 2017. Data removed for students not continuing to CH221.

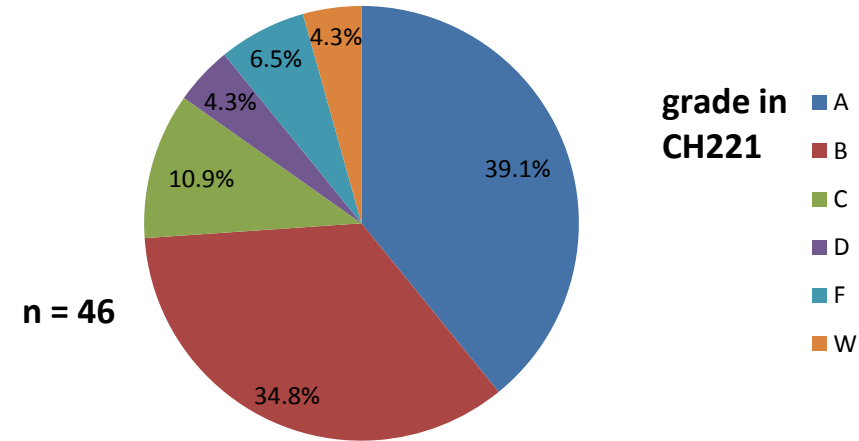
Students who took the assessment in CH151 fall term and passed CH151 and enrolled in CH221 winter term. n = 124

Data not shown for students who received an F on the assessment. n = 4

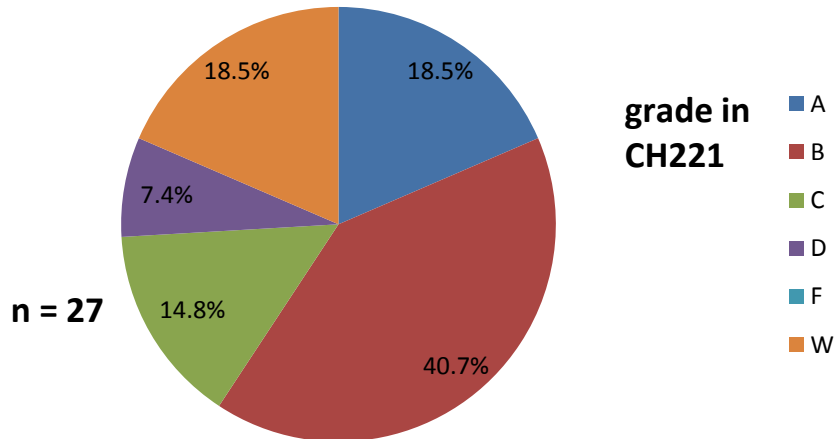
A on the assessment



B on the assessment



C on the assessment



D on the assessment

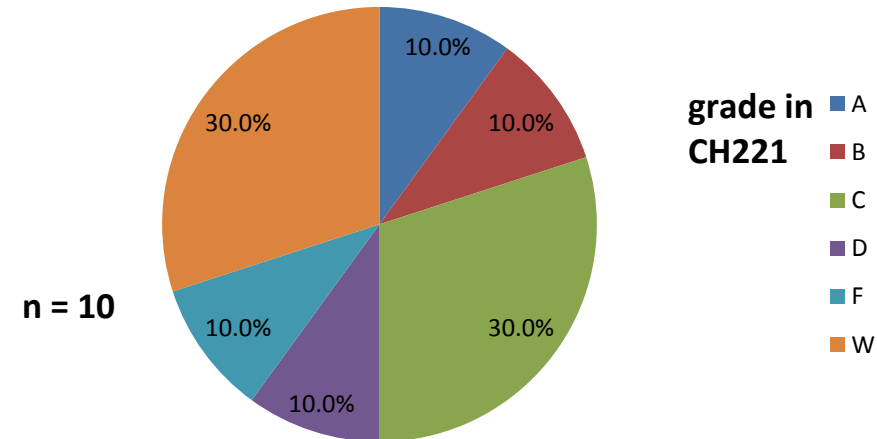


Figure 5. Relationship between final grade in CH151 fall term 2016 and final grade in CH221 winter term 2017.

Students who took the assessment in CH151 fall term and passed CH151. n = 218

